

PRG Trailers

PRG E-TECH 77



PULL OUT / PUSH IN RAMPS



WELL PROTECTED LIGHTING SYSTEM
AND REAR SUPPORT STANDS



BRADLEY CAST BODY / HEAD HITCH
AND TWO SPEED WINCH



PUNCHED TRANSPORTER DECKING



OPTIONAL CENTRE DECK SHOWN

BY LISTENING TO OUR CUSTOMERS REQUIREMENTS PRG TRAILERS INTRODUCE A BRAND NEW DESIGN TRAILER ACHIEVED BY SIMPLY PUTTING TOGETHER A NUMBER OF THE BEST FEATURES FROM OTHER MODELS IN OUR EXISTING TRAILER RANGE

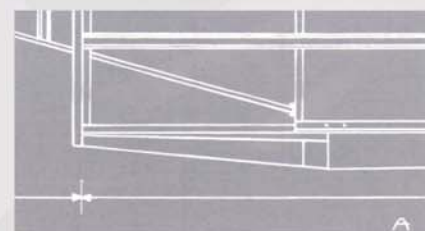
TODAY'S TRAILERS FOR TOMORROWS WORLD

THE E TECH 77 GIVES AN EXTRA WIDE BED FOR TODAY'S MODERN WIDE AND LOW CARS. SUPER-GRIP TRANSPORTER DECKING WHICH GIVES CLASS LEADING MULTIPLE TIEING DOWN POSITIONS AND THE ADDED SAFETY OF VEHICLE BEING CARRIED TOTALLY SECURE ON THE EXTRA GRIP GIVEN BY THE PUNCHED TRANSPORTER DECKING. THE PULL, PUSH IN RAMP SYSTEM MAKES LOADING AND UNLOADING THE QUICKEST AND EASIEST OF OPERATIONS. IDEAL FOR BOTH FULL COMMERCIAL USE AND THE PRIVATE INDIVIDUAL.

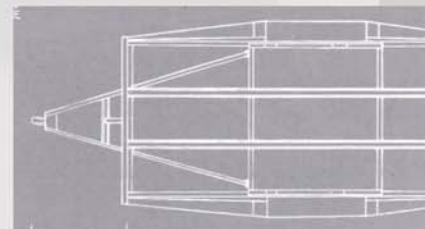
FEATURES:-

- FULLY GALVANISED CHASSIS.
- PUNCH SLOTTED TRANSPORTER DECKING.
- AUTO REVERSE BRAKING TO ALL WHEELS.
- ENCLOSED MUDGUARDS
- BRADLEY CAST BODY, CAST HEAD HITCH.
- TWO SPEED WINCH.
- SPARE WHEEL.
- TOW HITCH LOCK.
- WELL PROTECTED LIGHTING SYSTEM.
- REAR SUPPORT STANDS.

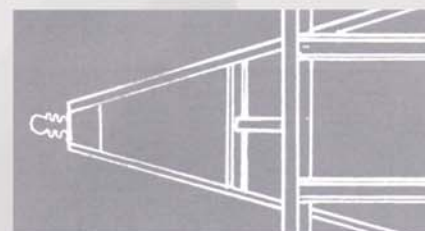
BED SIZE	12' X 6' 5" (3.66m X 1.95m)	14' X 6' 5" (4.26m X 1.95m)	15' 3" X 6' 5" (4.65m X 1.95m)
OVERALL LENGTH	16' 2" (4.93m)	18' 2" (5.53m)	19' 5" (5.92m)
OVERALL WIDTH	7' 6" (2.3m)	7' 6" (2.3m)	7' 6" (2.3m)
GROSS WEIGHT	2000kg	2000kg / 2600kg	2600kg
LOAD CAPACITY	1550kg	1500kg / 2025kg	2000kg



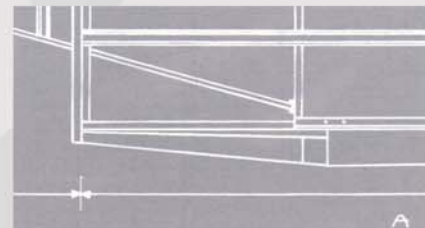
PULL OUT / PUSH IN RAMPS



WELL PROTECTED LIGHTING SYSTEM AND REAR SUPPORT STANDS



BRADLEY CAST BODY / HEAD HITCH AND TWO SPEED WINCH



PUNCHED TRANSPORTER DECKING

PRG
Trailers

OLD WOODYARD | LIGHTWOOD GREEN | AUDLEM | CREWE | CHESHIRE | CW3 0EN | UNITED KINGDOM

TEL: +44(0) 1270 812402 | FAX@ +44(0) 1270 811293 | WEB: www.prgtrailers.co.uk | EMAIL: info@prgtrailers.co.uk